



PEOPLE LIVING WITH HIV/AIDS VICTORIA ANNUAL REPORT 2011–12



living positive victoria
PEOPLE LIVING WITH HIV/AIDS VICTORIA

CONTENTS

PEOPLE LIVING WITH HIV/AIDS

VICTORIA INCORPORATED

Coventry House
Suite 1, 111 Coventry Street
Southbank, Victoria 3006

T: 03 9863 8733

F: 03 9863 8734

E: info@plwhavictoria.org.au
plwhavictoria.org.au

PHOTOGRAPHY

All images have been used with permission. You must seek permission in writing from PLWHA Victoria before reproducing photographs from this report in any medium. The inclusion of a person's photograph in the report implies nothing about their sexuality or HIV serostatus.

Photographs of the board and staff by Andrew Henshaw.
andrewhenshaw.com.au

LOGO DESIGN

Nasir Designs
99designs.com.au

PUBLICATION DESIGN

The PLWHA Victoria Annual Report 2011–2012 is designed by Ography, a proud supporter of PLWHA Victoria.
ography.com.au

Our Vision	3
Our Mission	3
President's Report	4
Executive Officer's Report	7
A fresh look to build recognition and engagement	9
About the new brand and identity	11
Health Promotion	12
Phoenix Workshop	12
Quit FRESH START	13
Opposites Attract	13
Peer Education	14
Poslink	15
Planet Positive	15
Festivals/Events	16
Your Local Resource	17
Website	17
Christmas Hampers	18
Treatment Interactive Events	18
The Sexually Adventurous Men (SAM) Project	20
HIV and Sexual Health Connect Line	21
Positive Speakers Bureau	22
Resources	25
Activities	26
Board	28
Meetings attended 2011/12	28
Staff	29
Awards	30
Treasurer's Report	31
Financial Report 30 June 2012	33
Thank you	40

OUR VISION

All people with HIV live in dignity and are able to lead valued and meaningful lives as full participants in society.

OUR MISSION

People Living with HIV/AIDS Victoria is a community-based organisation that works to advance the human rights and wellbeing of people living with HIV. Our mission is to educate, support and advocate on behalf of all people living with HIV in Victoria, as part of a society-wide response that seeks an end to the HIV epidemic.

PRESIDENT'S REPORT



Welcome to the 2011-12 annual report for People Living with HIV/AIDS Victoria. All Victorians living with HIV deserve to enjoy full and productive lives, raising families, supporting others and not have to face stigma or discrimination based upon their sero-status. We must continue to work with human rights advocates, health workers, and communities in our united efforts to end the epidemic.

Our work continues to support people living with HIV (PLHIV), from the newly diagnosed to those living long-term with HIV and other serious health challenges. We provide education, referral, peer support and advocacy for all positive people and this work not only supports our community but is an integral part of the response to HIV in Victoria and Australia.

While HIV diagnoses in Victoria have remained relatively stable over the last few years, the rate of HIV diagnoses in Victoria increased from 4.1 [diagnoses per 100,000 population] in 2001 to 5.5 in 2006 and then declined to 4.9 in 2010. However, the rate for 2011 is 5.02 and there are good reasons for us to be vigilant and work with all affected communities.

PLWHA Victoria and Straight Arrows relocated to Coventry House in April 2011, and in August 2011 the Honourable David Davis MP, the Victorian Minister for Health, officially opened Coventry House. At the end of 2011, Positive Women Victoria were invited to colocate and moved into Coventry House in early 2012. This marked an important step in bringing together the Victorian PLHIV organisations to improve their voice and advocacy.

Visitors to Coventry House will see a united PLHIV sector with each agency working in different demographic sectors of the epidemic, but towards a common vision. The shared facility supports staff of the three agencies to work together, sharing information and resources and developing joint programs.

Funding for the new premises has been provided by the Victorian Department of Health under an initiative designed to strengthen positive voices, which will enable greater collaboration between the state's HIV organisations. We acknowledge the financial commitment of the Victorian Department of Health as a sign of the ongoing support for the work of our organisations.

With the departure of Sonny Williams as Executive Officer in early July 2011, the Board set about recruiting a new Executive Officer to manage the organisation and the partnerships which underpin our work. Jane Hughes was appointed in October 2011 and remained in the role until December 2011. At the end of March 2012, the Board appointed Brent Allan to the position of Executive Officer. Brent has demonstrated himself to be extremely effective in the role and has been able to implement policies and processes which support the governance and operations of the organisation. Brent has developed new initiatives to improve partnerships with community sector partners and reinvigorate programs to better engage existing and new members' interest and participation in the organisation. We are excited about the year ahead and the opportunities that Brent's leadership presents.

In May 2012, the National Association of People Living with HIV/AIDS (NAPWA) launched the *Start the Conversation* campaign and I am sure many people will have seen the billboards and tram advertisements across Melbourne. The objective of the campaign encourages people living with HIV to talk to their doctor about the latest information regarding HIV treatment. Some people still believe that HIV medications present a greater risk than benefit. We know that left untreated, HIV does considerable damage to the immune system. The primary goal of the campaign is to help raise awareness of the growing data supporting starting treatment early to maintain good health. Promoting an up-to-date understanding of HIV and HIV treatments will also help reduce fear and stigma of people living with HIV.

On World AIDS Day in 2011, it was announced that Melbourne would host the 2014 International AIDS Conference. AIDS 2014 will have a strong focus on the Asia-Pacific region; as the region with the largest geographic area and population, with dramatically varying levels of wealth and a complex mix of structural and behavioural determinants of risk, experts from the region will have a unique perspective on the epidemic. The conference will provide Victoria and Australia with a unique opportunity to share medical research, health promotion, care and support knowledge and experience. Hosting the conference in Melbourne will allow many more Victorians access to high level discussions and the opportunity to learn about programs and information developed in other parts of the world. This is a wonderful opportunity for all of us and Victorians living with HIV will have an important part to play in hosting the conference.

I want to take this opportunity to acknowledge the current Board of Directors and those Directors that have stepped down over the past year - Shane Boyd, Paul Kidd and Ben Riethmuller.

I want to thank Suzy Malhotra who has shown enormous commitment not only to the membership but the organisation by stepping in numerous times to provide leadership and stewardship through all the changes over the past year. It has been a challenging year at times and I wish to acknowledge Cheryl Teng who provided support to both Board and staff through significant change in the organisation over the past 12 months. I would also like to thank the staff and volunteers who constantly demonstrate the passion and hard work which enables this organisation to continue to grow and develop.

Finally, as we move into a new year, I want to acknowledge that without the partnership we have with numerous individuals, businesses and agencies, we would not be able to be as successful as we are. It is the goodwill of many that makes this a special and unique organisation and one that I am proud to continue to lead.



Sam Venning
PRESIDENT

EXECUTIVE OFFICER'S REPORT



Strengthening positive voices is both a call to action as well as a philosophy which underpins a number of collaborative actions between the three partners which form to make Coventry House being PLWHA Victoria, Straight Arrows and Positive Women Victoria.

As part of the *Strengthening Positive Voices* initiative, a joint health promotion plan between the three PLHIV groups was developed which aims to ensure that service duplication is minimised and value can be added to health promotion services by making all partners aware of who is working on what activities. We are looking forward to reporting on the successes of the plan in its inaugural year and the development of a joint plan for the years ahead.

With Positive Women Victoria moving into Coventry House in January 2012, new systems and protocols have begun to be developed in earnest to ensure that the Coventry House partnership is able to grow and develop and at the same time maintain the strength of each individual agency's voice in the response to HIV/AIDS.

Although a significant year of change, it is a great testament to the staff and volunteers that in the last quarter of the year over \$17,500 was donated or received as value in kind services including over 550 hours of volunteer services.

PLWHA Victoria continues to offer a range of health promotion programs and we continue to have strong participation in all programs with nearly 350 clients taking part in these programs over the course of the year. We are investigating making the Connect Line a project wholly of the agency and feel confident that we can attend to the more than 960 calls and emails the service receives on an annual basis. The Sexually Adventurous Men's project has received funding for another year and we are keen to make sure that this community is well supported to make the informed decisions about their sexual health.

A continuing star of the agency is the Positive Speakers Bureau. With a signing of an MOU between the Coventry House partners in February, the program is now a joint program of the three agencies. Although led through PLWHA Victoria, the partnership with Straight Arrows and Positive Women has provided the program with additional speakers and an opportunity to ensure that the diverse experiences of People Living with HIV (PLHIV) are promoted through the service.

The year ahead holds great opportunities for the agency and for members. Many people will already have seen the ENUF campaign which aims to tackle HIV stigma and discrimination, and as this campaign builds over the next few years, we anticipate greater attention of this issue both in the community and mainstream press. This innovative campaign relies upon gathering stories and quotes from the community about both stigma and resilience and using these voices to shine a light upon issues which continue to profoundly affect the lives of people living with HIV. This campaign will be the featured promotion over the next few years and we hope to have ENUF built into the AIDS 2014 conference in Melbourne.

As a community organisation formed to support PLHIV from any background in Victoria, we are always thrilled to have new members join the ranks. With over 50 new members in the past year, the agency will be embarking upon a membership campaign to identify ways to support existing members and promote the agency to those who want to support its work. The members are why we exist, and with their support the agency remains a strong a powerful vehicle to ensure that PLHIV lives are represented, valued and respected.

Our partners and sponsors continue to provide the resources required to ensure that services are provided to the community such as *Poslink*, outreach programs, health promotion services and the Positive Speakers Bureau.

Our heartfelt thanks goes out to the Victorian Department of Health, ViiV Healthcare, Bristol Myers Squibb Virology, MSD Australia, Gilead, Janssen-Cilag, Abbott Australia, Boehringer Ingelheim and all those organisations, businesses and individuals who have provided in kind services and products to the agency over the past year.

Finally I want to acknowledge the hard work and dedication of both the staff and the board. It has been a year of big changes and their commitment to quality service delivery and the championing of positive voices sets our organisation in good stead for the year ahead.



Brent Allan

EXECUTIVE OFFICER

A FRESH LOOK TO BUILD RECOGNITION AND ENGAGEMENT

The visual brand of any not-for-profit organisation is an essential element in publicly expressing what the organisation does and what it stands for. Since the organisation was founded in 1989, People Living with HIV/AIDS Victoria has maintained the same name and logo. The visual identity we have used to communicate with members and partners has not undergone significant revision since that time.



Living with HIV has a different meaning in 2012 than it did in 1989, and several of our partner agencies in other states have acknowledged the need for a name change such as Positive Life in NSW, ACT and South Australia, and Queensland Positive People (QPP).

A review of the previous PLWHA Victoria brand highlighted several good reasons why it was time to update our brand and visual identity. The long acronym *PLWHA Victoria* has low recognition with some partners and the wider community. Use of the full organisational name, *People Living with HIV/AIDS Victoria*, might be more functional but used alone, this fails to capture our mission and values. For some members, clients, supporters and potential members, the inclusion of *HIV* or *AIDS*, and the associated stigmatisation, could be a barrier to their engagement and involvement.

In May 2012, the Board of PLWHA Victoria proposed that the business name of organisation remain *People Living with HIV/AIDS Victoria Incorporated* but that a new logo and visual brand should be developed which integrated the business name, a more expressive tag-line and a contemporary visual logo.

Members were consulted and engaged as the proposal was translated into reality. An online community survey found that nearly 75% of respondents (from a total sample size of 161) believed that the current logo was out dated and needed to change. The survey also asked people to rank the four potential tag lines below:

- Positive People Victoria
- Living Positive Victoria
- Victorian Positive People
- Positive Life Victoria

The tag line *Living Positive Victoria* was ranked the most popular.

Following the survey, a working group of Board members and staff was established to commission the new logo and visual brand. Through the website ggdesigns.com.au, a design brief was provided to graphic designers from around the world and they were invited to submit design concepts. From 21 submissions one design stood out as a clear front-runner. Developing the new design cost less than \$500.

The preferred design was then focus tested face-to-face with members to determine its resonance, meaning and applicability. Key feedback included:

- Those members participating in the focus testing were enthusiastic that a contemporary new logo was worthwhile in better communicating our organisational vision.
- The tag line *Living Positive Victoria* in the logo was considered easy to read, inviting and to directly express the nature of the organisation.
- The proposed new logo graphic was considered modern, vibrant, playful, friendly and more engaging than the existing logo.



living positive victoria
PEOPLE LIVING WITH HIV/AIDS VICTORIA

ABOUT THE NEW BRAND AND IDENTITY

Layout: The design utilises three distinct but integrated parts – the logo graphic, the tag-line and our business name. It is expected that all three elements will be used together and that the business name remains *People Living with HIV/AIDS Victoria*.

Colour: The design utilises a single blue colour that is already strongly associated with our existing corporate brand. This decision also minimises reproduction costs and the impact on existing branded materials.

Tag Line: The *Living Positive Victoria* tag line clearly expresses a key element of our stated mission and vision. Rather than being an alternative to the business name, the two elements work in tandem.

Graphic: The graphical element expresses the positive life concept, the importance of community, and the V image speaks to the Victorian context.

In August 2012 the Board of Directors resolved that the new logo and tag line, in conjunction with the full business name, should be adopted into a refreshed visual brand. A corporate style guide has been produced which will guide and govern the use of the visual brand. This will ensure that all of the elements are used consistently inside the organisation, by partners and other stakeholders.

The new branding will be rolled out following its launch at the 2012 AGM, which this year is being held in conjunction with the Australasian HIV/AIDS Conference (ASHM) in Melbourne.

Ian Muchamore & Stephen Eustace

BOARD MEMBERS

HEALTH PROMOTION

PLWHA Victoria's health promotion program plays a key role in the organisation's mission to advance the physical, emotional and social wellbeing of people living with HIV. This is done through a range of educational, information and support activities that provide the opportunity for PLHIV to build their capacity to improve their health outcomes.

PHOENIX WORKSHOP

The Phoenix workshop, now in its fifth year, continues to be an important first step on the path to obtaining better health, particularly for people recently diagnosed with HIV. This workshop has enabled people living with HIV the opportunity to develop their health literacy skills in order to deal not only with HIV itself in a medical sense, but also the many various psychosocial issues which present themselves in the context of living with HIV.

Four Phoenix weekend workshops were held over 2011. Each workshop continues to evaluate well with participants feeling that they take away essential information and skills to manage a new diagnosis.

"I now feel like I'm ready to re-join the universe again rather than lock myself away"

"I'm not as scared now I have all the facts"

Partnerships remain an essential component of Phoenix, with the ongoing involvement of HIV specialist GPs from high case load general practices, counsellors/peer support group facilitators from the Victorian AIDS Council and sexual health nurses from Melbourne Sexual Health Centre delivering expert advice and information on the challenges of living with HIV.

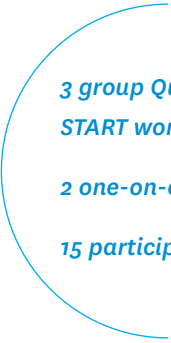
4 Phoenix workshops

3 follow-up sessions

35 participants

**5 organisational
partnerships**

Three six-month follow-up sessions have shown the overall value of the program in terms of acquired skills and health maintenance strategies. Further evaluation of the program was also conducted in partnership with researchers from the Australian Research Centre in Sex Health and Society (ARCSHS) on the *Reach* project. This process enabled us to enhance our evaluation of our follow-up sessions and measure how well the workshop participants were engaging and accessing various health services, as well as measuring how well these individuals were empowering themselves and improving their longer term health outcomes.



**3 group Quit FRESH
START workshops**

2 one-on-one sessions

15 participants

Quit **FRESH START**

The increasing importance placed on PLHIV's cardiovascular health reinforced the value of PLWHA Victoria providing Quit **FRESH START** smoking cessation courses. The Futures Survey (Australian Research Centre in Sex, Health and Society) consistently shows a disproportionately high rate of smoking (in contrast to the general population) among people living with HIV. This, coupled with the fact that smoking cessation can be the most important thing an HIV positive person can do to reduce their risk of a range of diseases, means it is imperative that people are assisted in their efforts to quit. The important element of the peer group support can significantly increase the chances of success as has been shown in the evaluations of past courses.

"Just doing this course and getting all this information and useful strategies seems to put it all in a neat package. It puts it all into place nicely. And doing it with you guys and getting your support helps."



2 workshops

10 participants

**4 organisational
partnerships**

OPPOSITES ATTRACT

Research has often showed that people in 'relationships' generally have better health outcomes. In partnership with the Victorian AIDS Council's Counselling Service, PLWHA Victoria once again successfully hosted the Opposites Attract workshop to assist couples of differing HIV status to enhance and maintain successful relationships. This workshop is a combination of information delivery and a safe and confidential space for couples to share the issues that being in such a relationship presents, while also improving the emotional and physical health and wellbeing of people living with HIV in these relationships. It also provides support to and builds capacity in the HIV negative partner in supporting the HIV positive partner.

PEER EDUCATION

This area of our work includes the delivery of advice, information and support on a wide range of issues such as health management including treatments, travel, law and sexual health. Most significantly this information is offered in a one-on-one or group environment that provides an opportunity to speak to someone as a peer with the shared experience of living with HIV.

As always, our strategy includes working in partnership with other relevant agencies. In 2011/12, we provided weekly outreach sessions at the Positive Living Centre and delivered support and information to 78 clients. The health promotion team also collaborated with Straight Arrows to deliver peer education programs at their Adult Retreat. This included components of the Phoenix workshop and the Quit *FRESH START* smoking cessation course.

Our programs are recognised across the country as models of good practice, and we were invited by the Tasmanian Council on AIDS, Hepatitis and Related Diseases (TasCHARD) to be a part of its two-day *Healthy Lifestyle* program in Hobart. This included facilitating components of the Phoenix workshop as well as a day of one-on-one peer education covering many issues of concern to Tasmanians living with HIV. Earlier this year, PLWHA Victoria was also invited by ACON Northern Rivers branch in NSW to contribute to their annual *Gay Men with HIV Retreat* in Northern NSW. This involved workshops focusing on living longer term with HIV and exploring various strategies in living well. As with all our health promotion work, these contributions were evaluated by their participants and the results showed the consistent value, quality and merit that each person attributed to our work.



60th edition published

*15,000 printed
copies distributed*

56 electronic editions

POSLINK

Poslink newsletter celebrated its 60th edition this year and a members' survey recently confirmed that the resource is still an important health promotion and education tool for the positive community. The survey showed that 51% of readers rated the overall quality of *Poslink* as 'good' with 34% rating it as 'excellent'. Over 60% preferred the paper edition over online and 54% of readers identified that through reading *Poslink* they 'had learnt something that is useful'.

We would like to take the opportunity to thank our regular contributors David Menadue, James May and Positive Women Victoria for their continued support and passion to inform and educate.

Poslink continues to attract new contributors and has expanded the content to include more personal stories, up-to-date treatment news and details on up and coming events within the community. PLWHA Victoria believes that *Poslink* remains a vital resource for HIV information within the community and would like to thank our readers for their support and feedback, which helps *Poslink* continue to reflect the voice of positive people in Victoria.

PLANET POSITIVE

The success and popularity of this social event has reached new heights with a near permanent residency at DT's Pub in Richmond and crowds totalling 80-100 people at each event. Planet Positive is a social event for PLHIV, their supporters and their friends and is an enjoyable afternoon of making new friends, indulging in an excellent bbq and hopefully winning great prizes in a welcoming and safe environment.

The success of the event goes in great part to the co-hosting with VAC/GMHC and the relationship with sponsors and supporters – and of course DT's Pub – to ensuring the resourcing and staging of the program.



4 events in 2011-12

390 attendants

*\$720 value in kind
door prizes donated*

FESTIVALS/EVENTS

PLWHA Victoria's commitment to education is reflected in the various events and festivals we attend each year. This year both staff, board and volunteers attended nine rural and metropolitan events to promote the work of PLWHA Victoria and target issues of stigma and discrimination within the wider community.


Our key objective for 2011-12 was to promote the work of the organisation and the wide range of services that we provide. This year's promotional products included water bottles and tote bags that displayed icons of the various projects and programs run by PLWHA Victoria.

The festival season kicked off with Midsumma Carnival in January and PLWHA Victoria invited community partners (Straight Arrows, Positive Women Victoria, Multicultural Health and Support Service, Royal District Nursing Services and the Positive Living Centre) to our marquee to profile their organisations and create a united voice for the positive community. A hugely successful day was had by all with record crowds at Birrarung Marr, thousands of visitors to our stall and the distribution of over 5,000 resources on the day.

For the Lunar Festival this year we partnered with the team at Multicultural Health and Support Services at both the Footscray and Box Hill locations to promote the HIV & Sexual Health Connect Line. 600 hand-held fans and 400 safe sex packs were distributed over both events and the team had a great day celebrating the Chinese New Year.

Given the incredible heat at the Royal Showgrounds, the water bottles and hand held fans were a big hit with the young crowd at the Big Day Out music festival in January. Throughout the day, staff and volunteers distributed 2000 safe sex packs and had the opportunity to speak with hundreds of young people regarding sexual health and negotiating safe sex.

The theme of youth continued into the university orientation week, where we've had a historical presence of several universities including Melbourne, Monash and Swinburne Universities. This year we targeted RMIT city campus, which has a population of 74,000 students including 30,000 international students. During the day volunteers distributed 2000 safe sex packs and 1500 resources, ranging from flyers and hand held fans, to water bottles and safe sex packs.



**6500 safe sex
packs distributed**

**7900 promotional
resources distributed**

72 volunteer participation

This year over 40 supporters and members joined the team for Pride March. *I don't discriminate, do you?* was displayed across our message boards as we marched under the banner of PLWHA Victoria. We received loud cheers from the audience who definitely noticed our presence. We proudly acknowledge and thank those who joined us in the march and encourage you to join us next year and share our united voice against stigma and discrimination.

The ChillOut festival in Daylesford is another one of our favourite events on the festival calendar. This year we gave away 700 tote bags, 700 water bottles and 1000 safe sex packs. We also partnered with Country Awareness Network (CAN), to attend and support the annual *Rainbow Rodeo*, an event that attracted over 40 people and was a great health promotion activity combined with an entertaining afternoon of sexual health trivia.

In the spirit of partnership we joined the Royal District Nursing Service for the *Where the Heart is* community festival in Edinburgh Gardens, Fitzroy. We came together with a great range of other health services on the day to provide support and information for people who are homeless or at risk of homelessness and doing it tough in Melbourne. Our stall distributed 600 show bags full of products and sexual health information.

YOUR LOCAL RESOURCE

In 2011 PLWHA Victoria produced a new resource entitled *Your Local: Victorian services for people living with HIV and AIDS* for newly diagnosed or PLHIV who have relocated to Victoria. This resource provides the latest information on HIV services available in Victoria in an easy pocket size resource. Due to growing demand the resource was updated and reprinted in 2012. Also an online resource, *Your Local* is being distributed by HIV nurses, doctors and social workers in Victoria.

WEBSITE

Averaging over 700 visits a month, the plwhavictoria.org.au website continues to provide the community with up and coming events, access to HIV resources and keeps our members informed about the future direction and goals via our strategic plan and annual reports. The pages most frequently visited by users this year included the *Positive Speakers Bureau*, *Meet our Speakers* videos, *Board and Staff Information* and *Living with HIV Resources*.



80 Christmas hampers

\$3550 value in kind
donations

11 volunteers involved

CHRISTMAS HAMPERS

The Christmas Hamper Appeal continues to enhance the lives of PLHIV every year by providing gifts and support to those who are most socially isolated over the festive period. Last year, hampers were delivered to people having to spend their holiday in hospital or alone at home and these were supported in no small part by the enormous efforts and contributions from generous sponsors, supporters and volunteers. Once again, Sircuit contributed donations and over 400 gifts through their unique events, *Give* and the *Adopt-A-Bear Auction*, and DT's Pub hosted their annual raffle to raise essential funds to purchase gifts for the hampers. This appeal has gone from strength to strength in its 15 year history and we are grateful to everyone who continues to be part of such an important program. A warm thanks to all our supporters and sponsors – Peter Alexander Sleepwear, Paul Bangay Designs, Mettascents, Sircuit, Anna Georgiou, Seven Deadly Sins, Daniel Brooks and DT's Pub.

TREATMENT INTERACTIVE EVENTS

In mid-2011, monitoring by the Victorian Department of Health showed that in the year to 30 April 2011, 37 HIV-positive gay men were diagnosed with hepatitis C (HCV) infection, a significant increase on previous years. In at least 19 of these cases, the diagnosing physician suspected sexual transmission of HCV. This represented an important challenge for the organisation and the community – with a need to inform people about the risks and give them the tools they need to protect themselves and their partners, without stigmatising people with HCV or create barriers between HCV-positive and HCV-negative people living with HIV.

In collaboration with the Victorian AIDS Council and Hepatitis Victoria, PLWHA Victoria hosted a free public forum in June 2011 to alert positive gay men to the risk of HCV. Over 50 members of the community attended the forum, where a panel of doctors, community members and epidemiologists presented and discussed issues around the sexual transmission of HCV and highlighted the fact that the risk was higher for those who engage in group sex, fisting, use of sex toys and non-injected drugs, as well as for those with some sexually-transmissible infections (STIs).

PLWHA Victoria continues to reinforce the existing safe sex message, which is that using condoms and water based lube for anal sex, gloves for fisting, and avoiding sharing sex toys or drug using equipment are the best ways to reduce the risk of contracting or transmitting both HIV and HCV.

In August 2011, PLWHA Victoria hosted the *HIV and the Law* forum at VicHealth in Carlton. Paul Kidd chaired the forum with presentations by Michael Williams (President, Victorian AIDS Council), Dr John Carnie (Chief Health Officer, Victorian Department of Health) as well as material from Sally Cameron (Public Policy Researcher). In front of an audience of 60, the panel lead a discussion on aspects of Criminal Law focusing on significant outcomes resulting from the Supreme Court of Victoria, Court of Appeal's June 2011 review of the Michael Neal case. Dr Carnie discussed Public Health legislation as well as the public health process as defined in *Guidelines for the management of people living with HIV who put others at risk*, while Sally Cameron provided a critical examination of the manner in which criminal law prosecutions can undermine the public health response and adversely impact people living with HIV.

The forum highlighted efforts to help the community understand the law and its impact, and also provided an opportunity to explain the work that PLWHA Victoria and the Victorian AIDS Council have been doing in recent months to engage justice authorities and the public health system to try to advocate for a more rational approach to dealing with criminal cases when they occur.

THE SEXUALLY ADVENTUROUS MEN (SAM) PROJECT

The Sexually Adventurous Men (SAM) Project is a joint venture between VAC/GMHC, PLWHA Victoria and the Australian Research Centre in Sex, Health and Society (ARCSHS), and was developed in response to research that highlights an increased risk of HIV and STI transmission amongst men in sexually adventurous networks.

The PLWHA Victoria component of the program aims to facilitate involvement from the HIV positive SAM community to develop sexual health initiatives that enhance the wellbeing of SAM living with HIV and prevent the onward transmission of HIV.

In 2011/12, the project has continued to establish, maintain and enhance relationships with event organisers and venue owners, organised social groups and the general SAM community to develop a range of initiatives, events and resources to inform the sexual health practices and health and wellbeing of SAM living with HIV.

The SAM Project has worked to achieve its aims through a variety of means.

This has included:

- Developing collaborative partnership with community organisations, venues and party organisers
- Staging campaign launches and events
- Ensuring project visibility and engagement at parties, venues and other events;
- Developing safe sex posters specific to parties and events
- Producing giveaways to promote campaign awareness and messages
- Production of four video stories
- Production of the *Down an' Dirty* website

Project achievements

- 12 partnerships with community groups, venues or party organisers
- 1295 poster distributed at 33 different events
- 11,070 resources distributed at 60 different events
- 48,830 safe packs distributed at 43 different events
- 8 different sets of safe sex posters targeted for specific parties, produced by the SAM Project in collaboration with partners
- 6 events in gay venues to promote VAC/GMHC campaign messages or SAM Project resources
- 2026 visits to the *Down an' Dirty* Website – downanddirty.org

HIV AND SEXUAL HEALTH CONNECT LINE

The HIV and Sexual Health Connect Line (Connect Line) is a confidential and anonymous service which provides information and support through referral about sexual health issues including HIV for all Victorians. Callers can access the service between the hours of 10 am through to 6pm Monday to Friday (excluding public holidays). **connectline.com.au** operates as an additional resource for those people wanting support and assistance outside of normal operating hours around HIV and Sexual Health concerns.

961 ConnectLine contacts

780 calls

173 emails

11,000 visits to website

Information and support through referral

Callers were more likely to call in relation to a perceived risk exposure to HIV rather than broader sexual health issues. The majority of callers were referred through to Melbourne Sexual Health Clinic, followed by the caller's own GP and the PEP information line.

Caller demographics

Callers identified Australia as country of origin (coi) followed by the United Kingdom, India, China, Italy, Greece and Malaysia amongst others. A majority of callers (two thirds) lived in metropolitan Melbourne while the remaining group lived in country/regional Victoria. Callers were more likely to identify as heterosexual over any other sexuality, be male in gender and HIV antibody negative, aged between 26 and 35 years of age.

Equity and access

Ongoing training and capacity development has continued throughout the year to expand staff knowledge of issues relevant to the provision of service and new and emerging issues that are identified from call content. The two predominant areas were around 'cultural health beliefs model' and the National Relay Service for those seeking information and support through referral who are non-verbal or hearing impaired. Staff from the Multicultural Health Support Service and National Relay Service provided this training to all Connect Line staff. Additionally, support training around HIV treatments and Hepatitis C Virus and treatment has been provided to staff who work on the service and those from partner organisations to ensure continuity of information provided through the service.



Service promotion

Given the diverse range of callers, the Connect Line has been promoted at a number of festivals and events during 2011/12 including GLBTI events i.e. Midsumma and Chillout, as well as events targeting youth and culturally and linguistically diverse communities including the Lunar Festival, Big Day Out and Orientation Week. Staff, volunteers and board members maintained a strong presence at all of these events and distributed over 8000 resources including safe sex packs and hand-held fans. HIV and Sexual Health Connect Line operates from 10am to 6pm, Monday to Friday (excluding public holidays) on 1800 038 125 or through connectline.com.au

POSITIVE SPEAKERS BUREAU

Memorandum of Understanding (MOU)

With the colocation of Positive Women Victoria and Straight Arrows to Coventry House we renewed the Positive Speakers Bureau (PSB) MOU between the three agencies.

The MOU is very much about a partnership approach to promoting the Bureau, recruiting new speakers and seeking additional funding opportunities.

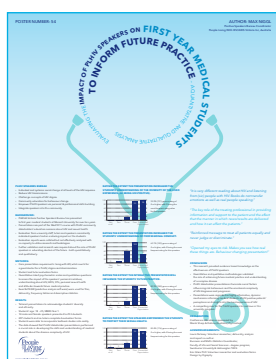
We also negotiated an inaugural MOU with Multicultural Health Support Service. Part of the MOU is to collaborate and promote the work of the PSB to reduce stigma and discrimination in the CALD and broader communities

Speaking engagements

- 204 individual talks delivered to 6566 people
- 132 talks by male speakers
- 72 talks by female speakers
- 53% dual speaker presentations
- 47% single speaker presentations

Our major clients are the VAC/GMHC with 24 presentations to all their programs and the Victoria Police Training Academy where we delivered 25 presentations to the highly successful Community Encounters on a fortnightly basis to new recruits. We have continued to diversify our speaking engagements and Rotary Clubs are a new addition to our PSB's talks.

The audience inspiration is reflected in the evaluations we continue to receive. Teachers and other agencies' staff continue to comment on the enduring impact of our speakers' presentations. Students and workshop participants continue asking questions and referring to the speakers weeks later.



Positive Speakers Bureau HIV & sexual health rural project

The Department of Health has continued to fund the PSB to deliver a rural project and we are building our partnerships with rural schools and expanding our reach into rural TAFE campuses and other agencies such as the SHADE program in Bendigo, the Geelong Deakin University School of Clinical Medicine and the Centre for Excellence in Rural Sexual Health.

Secondary school nurses continue to praise the effectiveness of our speakers to engage students in discussion about sexual health and wellbeing.

Speaker training

The PSB has been very successful in recruiting nine new male trainee speakers – both gay and heterosexual and one female speaker. Their professional and personal development is crucial to our ongoing success and their enthusiastic response to the training workshops and personal coaching is hugely encouraging.

The PSB training calendar continues to reflect the needs of speakers for ongoing development and updating of skills and we continue to train and support the speakers from Hepatitis Victoria who benefit from developing new skills and peer support through our program.

With the increase in dual diagnoses of HIV and HCV, we are well placed to provide speakers from both blood borne virus groups. We are now able to supply a high standard of HCV speakers to workshops with General Practice Victoria and the Pre and Post Test courses delivered by ARCSHS.

World AIDS Day Launch at the Victorian Parliament

PLWHA Victoria and the PSB launched World AIDS Day for the seventh year in the Victorian Parliament gardens in front of more than 100 people. The Health Minister, the Honourable David Davis, officially launched the day. The Minister spoke about his commitment to the HIV sector and about the importance of the work of the PSB in educating the community and reducing HIV stigma.

Inspiring speeches by Shane Boyd and Heather Ellis provided the audience with great insights into the impact of an HIV diagnosis and their individual journeys before and after being diagnosed and the immense challenges they have faced.

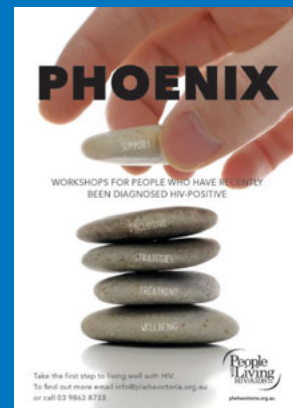
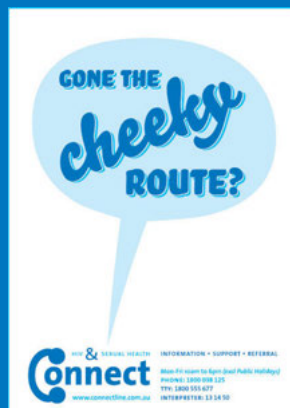
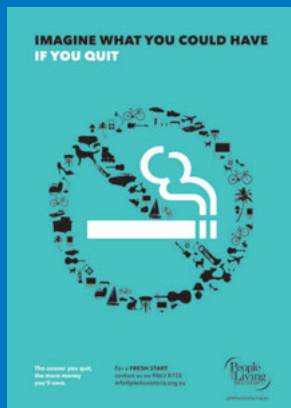
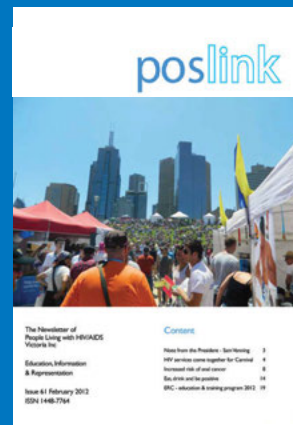
Morning tea (sponsored by Abbott Virology) was held after the launch. Guests enjoyed the opportunity to catch up and have time to remember all those who have lost their lives to AIDS and those who are living with HIV.

Positive Speakers Bureau sponsorship for 2011-12

The PSB continues to attract support from major pharmaceutical companies including Abbott Virology, MSD Australia, Janssen-Cilag and Bristol Myers Squibb. Sponsorship enables the PSB to sponsor talks to the many schools and NGOs who do not have the budget to pay for speakers and covers the additional speaker into most schools to enable gender diversity.

Our sponsors recognise the importance of speaker honorariums for the expertise our speakers bring to the presentations we do in the community. For each \$5000 in sponsorship, we can provide 50 additional talks. All speakers are paid for their talks once they have completed their training.

RESOURCES



your local

VICTORIAN SERVICES
FOR PEOPLE LIVING WITH
HIV AND AIDS

Main hospitals

- Alfred Hospital
 - Infectious Diseases Clinic
 - Commercial Rd, Prahran VIC 3180
 - phone: 03 9576 6881
- Austin Hospital
 - Infectious Diseases Department
 - 145 Studley Rd, Heidelberg VIC 3081
 - phone: 03 9499 6476
- Bendigo Community Health
 - HIV/AIDS Service
 - Servicos St, Eastwood VIC 3556
 - phone: 03 9484 4300
- Geelong Hospital
 - Sexual Health Clinic
 - Level 3, 48 Moor St
 - Geelong VIC 3220
 - phone: 03 5246 5117
- Monash Medical Centre
 - Infectious Diseases Unit
 - 246 Clayton Rd, Clayton VIC 3168
 - phone: 03 9594 4554

Counseling

- Royal Melbourne Hospital
 - HIV Services
 - Grattan St, Parkville VIC 3050
 - phone: 03 9342 7212
- St Vincent's Hospital
 - Infectious Diseases Unit
 - 41 Victoria St, Fitzroy VIC 3065
 - phone: 03 9228 2211
- The Royal Women's Hospital
 - Communicable Diseases Clinic
 - Grattan St & Flemington Rd
 - Parkville VIC 3052
 - phone: 03 9345 2000
- Wertheim Hospital
 - STD/HIV Clinic
 - 71 Wertheim St, Wertheim VIC 3090
 - phone: 02 6051 7335

EDUCATION • INFORMATION • REPRESENTATION

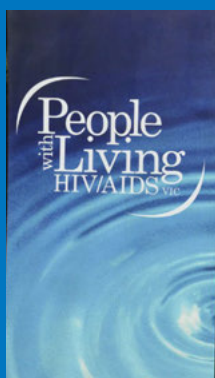
PLWHA Victoria is a community-based organisation that works to advance the human rights and wellbeing of people living with HIV. Our mission is to educate, support and advocate on behalf of all people living with HIV in Victoria, as part of a society-wide response that seeks an end to the HIV epidemic.

info@plwhavictoria.org.au • www.plwhavictoria.org.au

**People
Living
with
HIV/AIDS
Victoria Inc.**

Suite 1, 111 Coventry St
Southbank VIC 3006
Tel: 03 9863 8733

ACTIVITIES





BOARD

MEETINGS ATTENDED 2011/12

	MEETINGS ATTENDED	ELIGIBLE TO ATTEND	ATTENDED %	NOTES:
Sam Venning	11	11	100%	Stefanie Christian (SA) appointed July 2011
Ben Reithmuller	6	11	55%	
Neil Shepherd	10	11	91%	Michelle Wesley (PWV) appointed and resigned September 2011
Russell Varney	10	11	91%	
Jeffery Robertson	10	11	91%	Suzanne Lau Gooley (PWV) October 2011
Michael Casley	4	11	36%	
Dean Turner	5	8	63%	Dean Turner appointed October 2011
Ian Muchamore	3	3	100%	Leighton Brown resigned October 2011
John Donnon	1	1	100%	
Meg Warner (pwv rep.)	4	4	100%	Suzanne Lau Gooley resigned December 2011
Max Niggel (staff rep.)	1	1	100%	
Ryan Sherbrooke	1	1	100%	Ian Muchamore appointed February 2012
Stephen Eustace	1	1	100%	
Stefanie Christian (SA rep.)	4	11	36%	Heather Ellis appointed and resigned February 2012
Paul Kidd	6	7	86%	
Leighton Browne	1	3	33%	Meg Warner appointed March 2011
Shane Boyd	7	7	100%	Paul Kidd resigned March 2012
Suzanne Lau Gooley	4	6	67%	
Michelle Wesley (pwv rep.)	0	1	0%	Shane Boyd resigned March 2012
Heather Ellis (pwv rep.)	1	1	100%	Ryan Sherbrooke appointed June 2012
Total attendance of Board			77.5%	Stephen Eustace appointed June 2012
				John Donnon appointed June 2012
				Max Niggel (staff) appointed June 2012



STAFF

Brent Allan	Executive Officer (from March 2012)
Jane Hughes	Executive Officer (from October to December 2011)
Suzy Malhotra	Manager Health Promotion
David Westlake	Administrator
Max Niggel	Positive Speakers Bureau Coordinator
Guy Hussey	Connect Phonenumber Coordinator
Shannen Myers	Health Promotion Officer
Vic Perri	Health Promotion Officer
Wolf Graf	Health Promotion Officer
Andrew McLean	Administration Assistant, Positive Speakers Bureau (from April 2012)
Akke Halma	Finance Officer



AWARDS

COMMUNITY ENDEAVOUR AWARD

This award is presented to an individual, group or organisation in the community who through their endeavours has made a substantial and important contribution to the recognition of the issues and needs of HIV positive people.

DT's Pub

SPEAKERS BUREAU AWARD

This award is presented to an organisation, sponsor or individual that has made an outstanding contribution to the further development of the Positive Speakers Bureau. The recipient will have strengthened the capacity of the Bureau to deliver its vitally important work of reducing HIV stigma and discrimination in the wider community and raising awareness of the issues of living with HIV & AIDS.

Stefanie Christian

HIV AWARENESS AWARD

This award is presented to an individual, group or organisation that has made a remarkable and striking contribution to significantly improve awareness in the community through the means of the media.

James May

ENABLING SPONSOR AWARD

This award is presented to an individual, group or organisation that has given significant financial or in-kind support to People Living with HIV/AIDS Victoria enabling it to improve the breadth of its work.

Prue Marks

VOLUNTEER COMMITMENT AWARD

This award is presented to an individual, group or organisation that has made an outstanding contribution and commitment to HIV positive people through their volunteer work for People Living with HIV/AIDS Victoria.

Joe Borg

TREASURER'S REPORT

PLWHA Victoria is a not-for-profit organisation. As such, it is not intended that we make a profit each year. With 75% of our funding coming from the Department of Health it is intended that we pass on those funds through the delivery of services as effectively as possible for the ultimate benefit of PLHIV and as part of the HIV partnership and health promotion work in the state.

At the same time it is the responsibility of organisation, its Board and the Treasurer of the Board to ensure that at all times we have assets at hand to pay all liabilities that are occurring at any particular point of time.

For the year ending 30th June 2012, the organisation had 'Retained Profits and Members Funds' of \$24,722. This is down from the previous year where there were Retained Profits of \$77,372.

In 2011/12 our funding from the Department for services was down from \$784,246 to \$714,884 in this financial year – nearly \$70,000. However, the Department of Health has provided a separate grant of \$385,200 for the rental and ongoing costs of the premises we occupy in Coventry House. These funds administered by PLWHA Victoria are to cover the costs shared by all three organisations at Coventry House being Straight Arrows, Positive Women Victoria and ourselves.

This year's annual financial accounts have been achieved despite several issues which have impacted upon our accounts.

1. The overall operating result for the 2011/12 financial year was a loss of \$52,650 compared with a surplus of \$18,639 in the 2010/11 year due to the following issues:
 - a. Administration expenditure has increased during the year above a normal annual projected increase due in large part to additional costs associated with the change within the year of our Executive Officer resulting in higher administrative expenses (approximately \$26,000).
 - b. There has been a substantial increase in the Board's expenses during this financial year from \$13,561 to \$33,450 due to unforeseen legal and recruitment expenses.

-
- c. The organisation sought additional funds to cover the costs of sending a larger than normal PLHIV contingent to the International AIDS Conference (including delegates from Straight Arrows and Positive Women Victoria) in order to assess demand and capacity for the 2014 conference in Melbourne. Although the Conference expenditure was up from \$25,653 (2010/11) to \$57,359 (2011/12) this was off-set by a special grant of \$29,106 from the Department of Health for this additional conference attendance. This resulted in a net increase of \$2600.
 - d. The operating expenditure for the Sexually Adventurous Men's Project in 2011/12 was \$17,604 whilst in this financial year it was \$102,511. This is a result of a full year's operations as opposed to only a few months in 2011/12.
 - e. Annual leave liabilities were higher than in previous years as a result of staff unable to take leave due to leadership changes of approximately \$9000.

Lastly I would like to note the following:

- Firstly, the organisation is in a sound financial situation.
- Secondly, the organisation continues to provide the delivery of services for which it exists and is constantly seeking service efficiencies and improvements in the quality of services through the regular review of budgets and account keeping practices by our staff and Board members alike.
- Thirdly, I would like to thank the staff and specifically Akke, our Finance Officer, for all her hard work, the President and Directors of the Board of PLWHA Victoria as well as our auditors Clements Dunne and Bell who provide an extremely thorough and detailed audit service.



Neil Shepherd

TRESURER

FINANCIAL REPORT

30 JUNE 2012

FINANCIAL REPORT FOR THE YEAR ENDED 30 JUNE 2012

Your Board of Management submits the financial report of People Living with HIV/AIDS Victoria Inc. for the financial year ended 30 June 2012.

Board of Management

The names of Board of Management members throughout the year and at the date of this report are:

Russell Varney, Sam Venning, Jeffery Robertson, Neil Shepherd, Michael Casley, Ryan Sherbrooke appt Jun 2012, Stephen Eustace appt Jun 2012, John Donnon appt Jun 2012, Dean Turner appt Oct 2011, Ian Muchamore appt Feb 2012, Meg Warner appt Mar 2011, and Max Niggel appt Jun 2012.

Paul Kidd res Mar 2012, Suzanne Lau Gooley res Dec 2011, Leighton Browne res Oct 2011, Shane Boyd res Mar 2012, Stefanie Christian appt Jul 2011, Heather Ellis appt & res Feb 2012.

Incorporation

The association was incorporated in Victoria on 7th December 1999.

Principal Activities

PLWHA Victoria is a not for profit, community based organisation representing all people living with HIV in Victoria since 1988 and is committed to the advancement of human rights and wellbeing of all people living with HIV.

PLWHA Victoria works closely in partnership with a range of HIV-sector and other organisations to deliver a comprehensive and coordinated response to the needs of PLHIV in Victoria, nationally and internationally.

Our mission is to educate, support and advocate on behalf of all people living with HIV in Victoria, as part of a society-wide response that seeks an end to the HIV epidemic.

Significant Changes

No significant change in the nature of these activities occurred during the year.

Operating Result

The operating result for the year was a loss of \$52,650 (2011: \$18,639 profit) and no provision for income tax was required as the Association is exempt from income tax.

Signed in accordance with a resolution of the Board of Management.



Sam Venning

PRESIDENT

Southbank, 6 September 2012



Neil Shepherd

TREASURER

STATEMENT BY THE BOARD OF MANAGEMENT FOR THE YEAR ENDED 30 JUNE 2012

The Board of Management has determined that the association is not a reporting entity and that this special purpose financial report should be prepared in accordance with the accounting policies outlined in Note 1 to the financial statements.

In the opinion of the Board of Management the financial report as set out on pages 1 to 13:

- a) Presents a true and fair view of the financial position of People Living with HIV/AIDS Victoria Inc. as at 30 June 2012 and its performance for the year ended on that date.
- b) At the date of this statement, there are reasonable grounds to believe that People Living with HIV/AIDS Victoria Inc. will be able to pay its debts as and when they fall due.

This statement is made in accordance with a resolution of the Board of Management and is signed for and on behalf of the Board of Management by:



Sam Venning

PRESIDENT

Southbank, 6 September 2012



Neil Shepherd

TREASURER

INCOME AND EXPENDITURE STATEMENT FOR THE YEAR ENDED 30 JUNE 2012

	NOTE	2012 \$	2011 \$
<i>Operating Income</i>			-
Administration Fee		54,139	-
Donations		2,000	-
Emergency Distress Fund		2,389	1,866
Grants Received	1(a)	714,884	784,246
Interest Received	2	1,336	598
Other Income		1,371	54
Speakers Bureau Income		48,230	56,224
Sponsorship		57,691	28,018
		882,040	871,006

Less: Operating Expenditure

Administration Salaries and Superannuation		134,120	149,837
Administration		95,949	69,521
Board Expenses		33,450	13,561
Campaigns		94,346	90,392
Conferences		57,359	25,653
Depreciation	2	7,297	48,432
Employment Expenses		20,261	12,113
Entitlements and Provisions		22,257	15,094
Grants		5,600	4,400
Health Promotion		108,172	103,305
Health Promotion / Positive Education		55,187	42,373
Information Line		83,686	76,877
Poslink		20,122	17,767
Publications/Marketing/Promotions		-	2,156
Relocation Costs		-	78,706
Speakers Bureau		94,373	100,843
Sexual Adventurism		102,511	17,604
		934,690	868,634

Plus: Coventry House Income

Rent and On-Costs		320,612	88,013
Share and On-going Costs		26,171	-
		346,783	88,013

	NOTE	2012 \$	2011 \$
<i>Less: Coventry House Expenditure</i>			
Rent		182,317	53,437
Body Corporate		61,643	17,053
Administration Costs		54,139	-
Cleaning		15,727	2,420
Electricity		11,887	3,500
Insurance		1,695	-
Kitchen		2,058	179
Stationery		2,195	-
Telephones / Internet		13,027	2,118
Volunteers		2,096	-
		346,783	71,746

Profit / (loss) before income tax		(52,650)	18,639
Income tax expense	1(d) / 2	-	-
Profit / (loss) after income tax		(52,650)	18,639

Retained profits at the beginning of the financial year		77,372	58,733
--	--	---------------	---------------

Retained profits at the end of the financial year		24,722	77,372
--	--	---------------	---------------

The accompanying notes form part of this financial report.

ASSETS AND LIABILITIES STATEMENT AS AT 30 JUNE 2012

	NOTE	2012 \$	2011 \$
CURRENT ASSETS			
Cash and Cash Equivalents	3	344,035	357,902
Trade and Other Receivables	4	23,300	60,873
Total Current Assets		367,335	418,775
NON-CURRENT ASSETS			
Plant and equipment	5	18,056	23,832
Total Non-Current Assets		18,056	23,832
TOTAL ASSETS		385,391	442,607
CURRENT LIABILITIES			
Trade and Other Payables	6	253,541	276,374
Provisions	7	83,059	88,861
Total Current Liabilities		360,670	365,235
TOTAL LIABILITIES		360,670	365,235
NET ASSETS		24,722	77,372
MEMBERS' FUNDS			
Retained Profits		24,722	77,372
TOTAL MEMBERS' FUNDS		24,722	77,372

The accompanying notes form part of this financial report.

STATEMENT OF CASH FLOWS FOR THE YEAR ENDED 30 JUNE 2012

	NOTE	2012 \$	2011 \$
Cash flows from Operating Activities			
Receipts from sponsors, members, donations and fundraising		149,254	85,990
Operating grant receipts		1,080,443	867,352
Interest received		1,336	598
Payments to suppliers and employees		(1,243,378)	(858,171)
Net cash provided by / (used in) operating activities	B	(12,345)	95,769
Cash flows from Investing Activities			
Purchases of plant and equipment		(1,522)	(61,590)
Net cash (used in) investing activities		(1,522)	(61,590)
Cash flows from Financing Activities		-	-
Net increase / (decrease) in cash held		(13,867)	34,179
Cash at the beginning of the financial year		357,902	323,723
Cash at the end of the financial year	A	344,035	357,902

The accompanying notes form part of this financial report.

STATEMENT OF CASH FLOWS FOR THE YEAR ENDED 30 JUNE 2012

	2012	2011
	\$	\$
<i>Note A Reconciliation of Cash</i>		
For the purposes of the statement of cash flows, cash includes cash on hand and in banks and investments in money markets. Cash at the end of the financial year is shown in the statement of cash flows reconciled to the related items in the assets and liabilities statement as follows:		
Cash and Cash Equivalents (Note 3)	344,035	357,902
<i>Note B Reconciliation of net cash provided by / (used in) operating activities to profit / (loss) after income tax</i>		
Profit / (loss) after income tax	(52,650)	18,639
Non-cash flows in profit / (loss) after income tax:		
Depreciation	7,297	48,432
Changes in Assets and Liabilities:		
(Increase) / decrease in trade and other receivables	37,573	(34,879)
Increase / (decrease) in provisions	(5,802)	10,359
Increase / (decrease) in trade and other payables	(22,832)	53,218
Net cash provided by / (used in) operating activities	(12,345)	95,769

The association has no credit stand-by or financing facilities in place.

There were no non-cash financing or investing activities during the period.

NOTES TO THE FINANCIAL STATEMENTS FOR THE YEAR ENDED 30 JUNE 2012

1. SUMMARY OF SIGNIFICANT ACCOUNTING POLICIES

This financial report is a special purpose financial report prepared in order to satisfy the financial reporting requirements of the Associations Incorporation Act 1981 (Vic). The Board of Management has determined that the association is not a reporting entity.

The financial report has been prepared on an accruals basis and is based on historic costs and does not take into account changing money values, or except where specifically stated, current valuations of non-current assets.

a) Grants Received

Grants received have been allocated proportionately over the period covered by the grant and brought to account as income accordingly.

b) Income in Advance

Grants received are brought to account as income proportionately over the period covered by the grant therefore if the grant straddles the end of the financial year any unexpended grant monies are carried forward to the next financial year and recognised as income when the funds are effectively spent.

c) Membership Subscriptions Income

In accordance with generally accepted accounting principles for similar organisations, membership subscriptions are accounted for on a cash receipts basis.

d) Plant and Equipment

Each class of plant and equipment are included at cost less depreciation and impairment losses or at independent valuation.

The carrying amount of plant and equipment is reviewed annually by the board to ensure that it is not in excess of the recoverable amount from these assets.

The depreciable amount of all fixed assets including capitalised leasehold improvements is depreciated on a diminishing balance value over their useful lives to the Association commencing from the time the asset is held ready for use.

The depreciation rates used for each class of depreciable assets are:

CLASS OF FIXED ASSET	DEPRECIATION RATE
Old Computer Equipment	33.33%
New Computer Equipment	100%*
Office Furniture	20%

* in accordance with DHS funding which now treats computers as recurrent (non-capital) funding.

Leasehold improvements are amortised over the shorter of either the unexpired period of the lease or the estimated useful lives of the improvements.

Gains and losses on disposals are determined by comparing proceeds with the carrying amount. These gains and losses are included in the income statement. When revalued assets are sold, amounts included in the revaluation relating to that asset are transferred to retained profits.

NOTES TO THE FINANCIAL STATEMENTS FOR THE YEAR ENDED 30 JUNE 2012

e) *Income Tax*

The association has been granted exemption from income tax under Section 50-15 of the Income Tax Assessment Act 1997, as amended.

f) *Leases*

Lease payments under operating leases, where substantially all the risks and benefits remain with the lessor, are charged as expenses in the periods in which they are incurred.

g) *Goods and Services Tax (GST)*

Revenues, expenses and assets are recognised net of the amount of GST, except where the amount of GST incurred is not recoverable from the Tax Office. In these circumstances, the GST is recognised as part of the cost of acquisition of the asset or as part of an item of the expense. Receivables and payables in the assets and liabilities statement are shown inclusive of GST.

h) *Employee Benefits*

Provision is made for the association's liability of employees benefits arising from services rendered by employees to the end of the reporting period. Employee benefits have been measured at the amounts expected to be paid when the liability is settled.

	2012	2011
	\$	\$
2. PROFIT / (LOSS) AFTER INCOME TAX		
Profit / (Loss) after income tax has been determined after:		
Crediting as income		
Interest received	1,336	598
Charging as expenses:		
Depreciation of plant and equipment	7,297	48,432
Auditors' remuneration		
- Auditing the accounts	2,500	2,500
- Other services	750	750
3. CASH AND CASH EQUIVALENTS		
Petty Cash	424	392
Cash at Bank	55,135	292,139
Emergency Relief & Distress Account	10,492	13,662
Interest Bearing Deposits	30,942	30,939
Max-I Direct Account	247,042	20,770
	344,035	357,902
4. TRADE AND OTHER RECEIVABLES		
Trade Debtors	23,300	14,059
Bond – Coventry Street*	-	45,109
Prepayments	-	1,705
* Replaced via a Bank Guarantee	23,300	60,873
5. PLANT AND EQUIPMENT		
Office Furniture at cost	64,045	63,936
Less Accumulated Depreciation	(64,045)	(62,355)
	-	1,581
Computer Equipment at cost	44,160	43,110
Less Accumulated Depreciation	(40,184)	(38,303)
	3,976	4,807
Relocation Assets at cost	61,764	61,401
Less Accumulated Depreciation	(47,684)	(43,957)
	14,080	17,444
	18,056	23,832

NOTES TO THE FINANCIAL STATEMENTS FOR THE YEAR ENDED 30 JUNE 2012

	2012 \$	2011 \$
6. TRADE AND OTHER PAYABLES		
Project Funds in Advance (Unexpended)	209,267	190,490
Trade Creditors	65,093	78,696
Accrued Expenses	3,250	4,814
GST Liability	1	2,374
	253,541	276,374
7. PROVISIONS		
Annual Leave	53,415	44,526
Long Service Leave	29,644	44,335
	83,059	88,861
8. LEASE COMMITMENTS		
Operating Lease Commitments		
Premises, Motor Vehicle & Photocopier		
Payable – minimum lease payments		
- not later than 12 months	247,386	241,080
- between 12 months and 5 years	696,718	944,104
- greater than 5 years	-	-
Total Lease Liability	944,104	1,185,184

The association has an operating lease for its premises in Coventry St. The property lease is a non-cancellable lease, with a five-year term, with rent payable monthly in advance. Contingent rental provisions within the lease agreements require that the minimum lease payments shall be increased by 4% per annum. An option exists to renew the lease at the end of the five-year term for two additional terms of five years. The lease allows for the sub-letting of all lease areas.

The association had two operating leases, one for a motor vehicle and one for a photocopier. The photocopier lease expired on 30 June 2011 and has not yet been renewed.

Summit Auto Lease Australia Pty Ltd held a charge over the assets of the association for the operating lease on the motor vehicle.

INDEPENDENT AUDITOR'S REPORT

REPORT ON THE FINANCIAL REPORT

We have audited the accompanying financial report, being a special purpose financial report of People Living with HIV/AIDS Victoria Inc. (the association) which comprises the assets and liabilities statement as at 30 June 2012 for the year then ended, the income and expenditure statement, statement of cash flows, a summary of significant accounting policies, other explanatory notes and the statement by members of the board of management.

BOARD'S RESPONSIBILITY FOR THE FINANCIAL REPORT

The board of management of the association is responsible for the preparation and fair presentation of the financial report and have determined that the accounting policies described in Note 1 to the financial statements, which form part of the financial report are consistent with the financial reporting requirements of the Associations Incorporation Act 1981 (Vic) and are appropriate to meet the needs of the members. The board of management's responsibilities also include designing, implementing and maintaining internal control relevant to the preparation and fair presentation of the financial report that is free from material misstatement, whether due to fraud or error; selecting and applying appropriate accounting policies; and making accounting estimates that are reasonable in the circumstances.

AUDITOR'S RESPONSIBILITY

Our responsibility is to express an opinion of the financial report based on our audit. No opinion is expressed as to whether the accounting policies used, as described in Note 1, are appropriate to meet the needs of the members. We conducted our audit in accordance with Australian Auditing Standards. These Auditing Standards require that we comply with relevant ethical requirements relating to audit engagements and plan and perform the audit to obtain reasonable assurance whether the financial report is free from material misstatement.

An audit involves performing procedures to obtain audit evidence about the amounts and disclosures in the financial report. The procedures selected depend on the auditor's judgment, including the assessment of the risks of material misstatement of the financial report, whether due to fraud or error. In making those risk assessments, the auditor considers internal control relevant to the entity's preparation and fair presentation of the financial report in order to design audit procedures that are appropriate in the circumstances, but not for the purpose of expressing an opinion on the effectiveness of the entity's internal control. An audit also includes evaluating the appropriateness of accounting policies used and the reasonableness of accounting estimates made by the committee of management, as well as evaluating the overall presentation of the financial report.

The financial report has been prepared for distribution to members for the purpose of fulfilling the board of management's financial reporting under the Associations Incorporation Act 1981 (Vic). We disclaim any assumption of responsibility for any reliance on this report or on the financial report to which it relates to any person other than the members, or for any purpose other than that for which it was prepared.

We believe that the audit evidence we have obtained is sufficient and appropriate to provide a basis for our audit opinion.

INDEPENDENCE

In conducting our audit, we followed applicable independence requirements of Australian professional ethical pronouncements.

QUALIFICATION

As is common for organisations of this type, it is not practicable for the associations to maintain effective systems of internal controls over donations and other fund raising activities until their initial entry in the accounting records. Accordingly, our audit in relation to donations and fund raising was limited to amounts recorded.

QUALIFIED AUDITOR'S OPINION

In our opinion, except for the effects on the financial report of the matter referred to in the qualification paragraph, the financial report of People Living with HIV/AIDS Victoria Inc. presents fairly, in all material respects the financial position of People Living with HIV/AIDS Victoria Inc. as at 30 June 2012 and of its financial performance and cash flows for the year then ended in accordance with the accounting policies described in Note 1 to the financial statements and the Associations Incorporation Act 1981 (Vic).

BASIS OF ACCOUNTING

Without modifying our opinion, we draw attention to Note 1 to the financial report, which describes the basis of accounting. The financial report has been prepared to assist People Living With HIV /AIDS Victoria Inc to meet the requirements of the Associations Incorporation Act 1981 (Vic). As a result, the financial report may not be suitable for another purpose.



Clements Dunne & Bell Partnership
CHARTERED ACCOUNTANTS



Andrew Wehrens
PARTNER
Melbourne, 6 September 2012

THANK YOU

Abbott Virology
Adrenalin Healthcare
Affordable Trade Services
AIDS Council of NSW (ACON)
Andrew Henshaw
Andrew Wehrens
Anglicare Victoria
Anna Georgiou
The Alfred Education and
Resource Centre
The Alfred HIV Services
Asvin Phorugngam
Australian Federation of AIDS
Organisations (AFAO)
Australian Research Centre
in Sex, Health and Society
(ARCSHS)
Ben Chan
Beng Eu
Bill Gianoulas
Boehringer Ingelheim
Bruce Johnston
Bruce McKenzie
Bristol-Myers Squibb
Bumpa Drag
Burnet Institute
Caitlin McDowell
Campbell Moody
Cath Smith
Cheryl Teng
Chris Driscoll
Clements Dunne
& Bell Partnership
Club 80
Colgate
Craig Willingham
Hon Daniel Andrews MP
Daniel Brace
Daniel Brooks

Daniel Reeders
Daniel Ward
Hon David Davis MP
David McCarthy
David Menadue
David O'Keeffe
Dean Beck
Department of Health
Dimitri Christou
DT's Pub
Eagle Leather
Emmanuel Ammo
Fhai White
55 Porter Street
Fragile Design
Dr Frank Barbagallo
Garrett Prestage
Garry Sattel
Gilead
Gregory Ladner
Hepatitis Victoria
Howard Stoney
James May
Jamie Ivarsen
Janssen
Jeffrey Robertson
Jo Pearson
Jo Watson
Joe Borg
Dr John Carnie
Joy 94.9
Judith Gorst
Kent Bangay
Lance Hatley
Laird Hotel
Laura Delaney
Lucrezia de Sade
Malcolm Whitling
Mannhaus

Margie Powell
MAST Melbourne
Matt Bottos
Melbourne Community
Voice (MCV)
Melbourne Chargers
Melbourne Queer
Film Festival
Mercedes-Benz
Australia/Pacific
Merck Sharpe and Dohme
Michael O'Donoghue
Michael Williams
Midsumma Festival
MOR Cosmetics
Multicultural Health and
Support Service (Centre for
Culture, Ethnicity and Health)
National Association
of People Living with
HIV/AIDS (NAPWA)
National Relay Service
Neil Armstrong
Norm Roth
Nurse Betty
Ography Design
Pat Garner
Paul Bangay
Paul Rathbone
People 2 People IT Services
Positive Life NSW
Peter Alexander
Peter Holdsworth
Philip Sweeney
The Piercing Urge
Positive Living Centre
Positive Speakers Bureau
Positive Women Victoria
Prahran Market Clinic

Pride March
Prue Marks
Queensland Positive People
QUIT Victoria
Rajesh Khanna
Richard Spiteri
Robert Mitchell
Rowena Doo
Royal District Nursing Service
Sarah Garner
Scott Murphy
Seven Deadly Sins
Shane Jeetoo
Simon Coyle
Simon Dresens
Sircuit Bar
Social Firms Australia
Sourabh Malandkar
Southern Star Observer (SSO)
Steven Fahd
Straight Arrows
TasCHARD
Tex Bates
Tim Farag
Tobin Saunders
Total Print
Trish Thompson
Toula Elefsiniotis
Victorian AIDS Council/Gay
Men's Health Centre
(VAC/GMHC)
Vic Bears
ViiV Healthcare
Warren Donald
Ash
Josie
Jay
Merryn



living positive victoria
PEOPLE LIVING WITH HIV/AIDS VICTORIA